

**CT DEEP 2017
FISHING REPORT NUMBER 4
5/4/2017**



American Shad (*Alosa sapidissima*)



YOU CAN FIND US DIRECTLY ON FACEBOOK. This page features a variety of information on fishing, hunting, and wildlife watching in Connecticut. The address is www.facebook.com/CTFishandWildlife.

SHARE THE EXPERIENCE
Take someone fishing

INLAND REPORT

DEEP'S 2017 IN-SEASON SPRING TROUT STOCKINGS CONTINUE. Prior to Opening Day, approximately 306,000 trout were stocked into nearly 100 lakes and ponds and over 120 rivers and streams located throughout Connecticut. DEEP's in-season stockings are now underway with nearly 210,000 additional trout scheduled to be stocked between Opening Day and the middle of May.

TROUT- RIVERS & STREAMS - Trout anglers have been finding some good action in a number of areas last week thanks to comfortable flows (currently at or below typical early May levels, *see streamflow graphic on page 5*), warming water temperatures, plenty of hatches starting, and plenty of stocked trout waiting for anglers. With 1-2 inches of rain possible in the forecast for Friday, conditions, especially early in the weekend, may be on the tough side in some areas (depending on actual rainfall amounts). Anglers may want to keep smaller streams and tributaries in mind as they'll drop quickest should rainfall totals be on the high end (stream flows for a number of areas can be found at <http://waterdata.usgs.gov/ct/nwis/rt>).

With a number of hatches coming out, Cahills, stoneflies, Coachmen, and of course BWO's are working well. Hendricksons are out on the Housatonic and Farmington rivers. Streamers doing well include Black Ghost, Woolly Buggers, Copper Johns and Hare's Ears. Power Bait and worms are starting to work better. Fair to good reports last week from the Hammonasset River, Salmon River, Willimantic River, Natchaug River, West Branch Farmington River and Saugatuck River; mixed reports from the Farmington River, Pomperaug River and Housatonic River, and slow fishing reported from the Blackberry River.

Farmington River - Fishing improved last week with fishable flows, more hatches appearing, and more stocked fish. Conditions for this weekend will depend upon the amount of rainfall on Friday. Right now, current forecast are for over an inch of windswept rain. If true, fishing could be poor over the weekend, especially bellow the confluence with the Still River. Currently flows are clear and

Anglers- ALL

of your dollars invested in a fishing license go to support fish and wildlife!

State law (CGS 26-15a) requires 100% of the fees collected from the sale of sporting licenses to be allocated from the General Fund to the Department of Energy and Environmental Protection, Bureau of Natural Resources.

Your investment makes a difference. Thank You.

moderate (328 CFS at Riverton plus an additional 91 CFS from the Still River). Water temperatures range from the low 40's to around 50 °F.

Hatches/patterns. The typical mid-late April hatches/patterns continue as temps struggle to move upwards. With higher flows expected nymphs and streamers should produce. Typical go-to flies this time of year include Blue Wing Olive, Hendrickson (now ranging from Unionville up to the upper end of the year-round catch-and-release area), Winter/Summer Caddis, Pheasant Tails, Hares Ears, Stonefly nymphs, Midge and Blue Quill. Nymphs (#18-22) are always a good go-to fly, try Bead Head, Midge Pupa, Brassie, Zebra Midge or Copper John patterns. Streamers are also a good option (White Zonkers & Buggers (#4-12) as well as Muddlers, Micky Finn, Grey or Black Ghost).

Housatonic River - Conditions for the weekend should be poor to fair if the heavy rain pans out on Friday and flows manage to increase to unfishable levels. The trout are there as the river was stocked (both the upper TMA and the Bulls Bridge/Ten Mile River TMA) by DEEP and by Housatonic River Outfitters and flows are currently "clearing", a bit higher than typical early May levels (currently 1,590 CFS at Falls Village and 1,990 CFS at Gaylordsville) and quite fishable. Anglers can call FirstLight Power Resources at 1-888-417-4837 or check the USGS website (<http://waterdata.usgs.gov/ct/nwis/current/?type=flow>) for updated Housatonic River flow information (and also check with a local bait & tackle shop). Morning water temperatures are currently in the mid 50's °F.

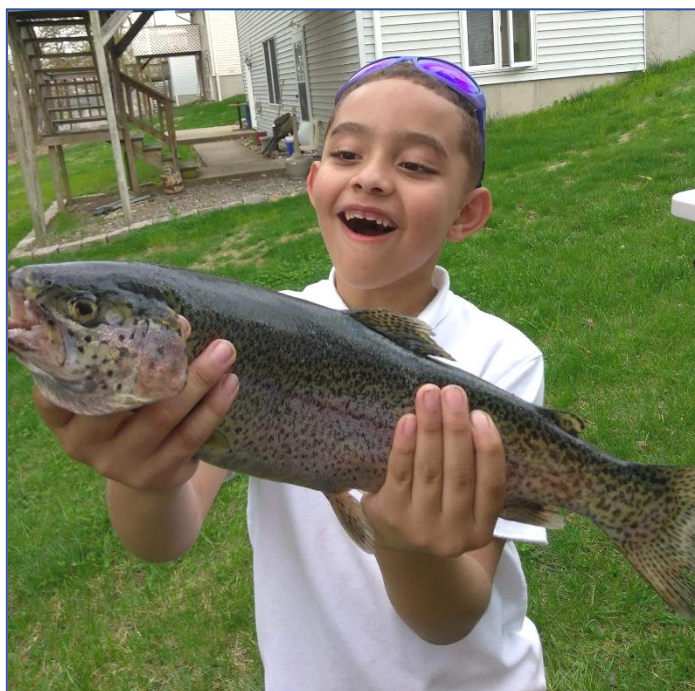
The typical patterns for mid-late April are still working in early May and include March Brown (#10-12), Pheasant Tail (#12-18), Stoneflies (#6-10), Pheasant Tails (#14-20), and Black Stoneflies (#18-22). Hendricksons reportedly are beginning to show. Nymphing (try Bead Head, Midge Pupa or Copper Johns) and streamers (such as White/Yellow Zonkers or Wooly Buggers) are good options for fishing the current flows.

RIVERS AND STREAMS STOCKING UPDATE (Note that all stocking schedules are subject to change):

In **eastern Connecticut**; the **Still River** (Eastford), **Mount Hope River**, **Fenton River**, **Salmon River** (including the TMA), **Yantic River** (including the TMA), **Five Mike River** (lower), **Blackledge River** (lower), **Roaring Brook** (Glastonbury), and the **Natchaug River** were stocked.

In **western Connecticut**; the upper and middle **Naugatuck River** (Harwinton/Litchfield/Torrington section and the Thomaston/Waterbury section), **Sandy Brook**, the **Still River** (Winsted), the **Nepaug River**, **Pomperaug River**, **West Branch Salmon Brook**, **East Branch Salmon Brook**, **Hall Meadow Brook**, **East Branch Naugatuck River**, **West Branch Naugatuck River**, the **Naugatuck River TMA**, **Macedonia Brook** (within state park) and the **Quinnipiac River** were stocked.

TROUT-LAKES & PONDS – With the expected inch or more of rain, lakes and ponds may be the best bet for trout this weekend, although we still get many reports of low catch rates. Fishing continues



Personal Best! Congratulations to Ayden T. who caught his personal best Rainbow Trout from Upper Fulton Park Pond, Waterbury this past week. Keep it up!

in the doldrums at many locations but is picking up, with reports from Highland Lake (fair to good action reported), Quonnipaug Lake (fair), Gardner Lake (some decent fish and action reported), Cedar Lake (fair to good), Branford supply Ponds (fair), Uncas Lake (decent), East Twin Lake (still slow), and Candlewood Lake (still slow to fair).

LAKES AND PONDS STOCKING UPDATE (Note that all stocking schedules are subject to change):

In **eastern Connecticut**; Cedar Lake, Pataconk Lake, Uncas Lake, Horse Pond, Beach Pond, Amos Lake, Long Pond, Moosup Pond, Walkers Reservoir and Coventry Lake were stocked.

In **western Connecticut**; Christensen's Pond, Highland Lake, Stillwater Pond, Mohawk Pond, West Side Pond, Wononskopomuc Lake, Highland Lake, East Twin Lake and Tyler Pond were stocked.

TROUT PARKS – good reports from a number of the trout parks, including Valley Falls Park Pond and Chatfield Hollow. The **Chatfield Hollow** (brook and pond), **Mohegan Park Pond**, **Black Rock** (both the pond and Branch Brook), **Kent Falls**, **Wharton Brook**, **Stratton Brook**, **Natchaug River**, **Day Pond** and **Valley Falls Park Pond Trout Parks** were stocked this week.

LARGEMOUTH BASS fishing is picking up in a number of areas, water's warming up, lots of pre-spawn fish and some fish bedding. Reports are from Candlewood Lake (some 5 to 6-lb bass continue to be found), Gardner Lake (fair to good), Middle Bolton (slow), Bashan Lake (good action for bass, fish were in all phases of spawning, water temps 59 – 63 °F), Wononskopomuc Lake (fair), Lake Hayward (good), Highland Lake (bass are being hard to catch), Lake McDonough (on the slow side), and Ball Pond (good). **Tournament angler** reports are from Amos Lake (fair action, some size with fish averaging more than 2 lbs apiece with a 6.1 lb lunker), Hopeville Pond (fair fishing for most, not a lot size, but a 5.51 lb lunker), Lower Moodus (action fair at best, no size whatsoever with a 1.21 lb lunker) & Upper Moodus (action fair, not much size with but with a 5.84 lb lunker) Reservoir (for both basins fish were pre-spawn, water temps were around 57 °F), Pachaug Pond (fair to good fishing, some good size with an average weight of 2.75 lbs per fish for one club and a 1.95 lb average with a 4.86 lb lunker for a second club), Pattagansett Lake (fair to good fishing for most, 3.21 lb lunker), Quaddick Lake (water temps in the 60's °F, spawn Was on, good action with lots of "cookie cutter" bass with only five fish over 3 lbs but a 5.6 lb beauty for a lunker), Candlewood Lake (fair action for largemouth, some fish bedding up, lunkers included 6.19 lb, 6.08 lb, 5.26 lb, 5.21 lb, 4.9 lb, and 4.8 lb bass), Lake Lillinonah (slow for largemouth), and Squantz Pond (fair to good fishing, not many bigger fish).

SMALLMOUTH BASS. Smallmouth are being found, with good to very good reports from Candlewood Lake and good reports from Lake Lillinonah. **Tournament angler** reports are from Candlewood Lake (good to very good for many anglers, with lots of 3-4 lb fish and several 5 lb plus fish, lunkers included 5.82 lb, 5.66 lb, 5.21 lb, 4.83 lb, and 4.38 lb fish), Lake Lillinonah (fair to good for smallies, some good size, with 4.92 lb, 4.13 lb, 3.21 lb lunker), and Squantz Pond (fair action).

ZEBRA MUSSELS REMINDER

Zebra mussels are now found in a number of locations scattered throughout the Housatonic River and its impoundments including Lake Lillinonah (*since 2010*), Lake Zoar (*since 2010*) and Lake Housatonic (*since 2011*).

Prior to their discovery in Lakes Lillinonah and Zoar in 2010, zebra mussels had been found (1998) in CT only in East Twin Lake and West Twin Lake (Salisbury). Anglers fishing in any of these waters and western Connecticut in general **should use extra care to avoid transporting water, aquatic vegetation, and possibly zebra mussels to new locations.** Information

For more information including precautions that should be taken to prevent the spread of zebra mussels to additional waters, visit www.ct.gov/deep/invasivespecies or the Aquatic Invasive species section of the 2017 CT angler's Guide (www.ct.gov/deep/anglersguide).



WALLEYE. Some catches reported from Squantz Pond, Batterson Park Pond, and the CT River (Enfield area).

CHAIN PICKEREL. Good reports from Bashan Lake, with fish up to 2.5 lbs being caught.

COMMON CARP are really hitting well with pre-spawn action. Good advice from an avid Carp-er. "To all anglers looking to get into carp fishing please get a fish friendly net and a landing mat to place your fish on for unhooking and during the photo shoot! These are the biggest fresh water fish in CT and they are also very easily damaged due to poor landing and release!"

CHANNEL CATFISH are providing some solid action in the Connecticut River with one angler letting us know he was in double figures with fish ranging 6-12 pounds. Our annual stocking is expected towards the end of this month.

CONNECTICUT RIVER

The river remains cool and this may be affecting runs. Flows had cleared and dropped to right around typical early May levels, but have since risen some and are turbid and somewhat high. Depending on rainfall amounts to the north of Connecticut, flows may increase further and become more turbid.

STRIPED BASS (schoolie-size and some bigger fish) are being found throughout the river. **AMERICAN SHAD** can be found throughout the river (fair to good action continues in the Enfield area) although water temperatures seem to be slowing them down. Willow leaves have been working. **CARP** fishing is HOT in some of the coves and shallow tributaries, but anglers are having trouble catching them in others. Some **LARGEMOUTH BASS** are being found in the coves from just below Hartford to Haddam.

NOTES & NOTICES:

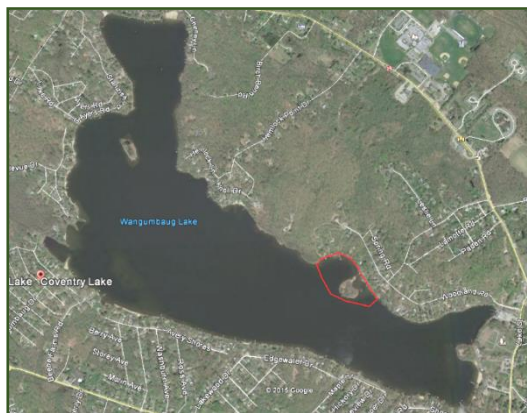
DRAWDOWN UPDATES – BASHAN LAKE, and **DOOLEY POND** have refilled and the state boat launches on these two lakes are open to use. **HANOVER POND** has also refilled.

BRANFORD RIVER (boat launch). The Branford River state boat launch continues to be closed for renovations. Alternative nearby launch sites include the Guilford Town boat launch and the East River State boat launch, both in Guilford.

CONNECTICUT RIVER (invasive species alert). Hydrilla was recently found in the main stem Connecticut River in Glastonbury (near Glastonbury's Riverfront Park & Boathouse). See the Coventry Lake entry below for what river users should do to prevent spread of this invasive plant to other waterbodies.

COVENTRY LAKE (invasive species alert). Hydrilla, a very highly invasive aquatic plant, has been found growing in Coventry Lake. All lake users should take extra care to check and clean their boats (including canoes, kayaks and rowing sculls), trailers, and fishing equipment before leaving the boat launch, or leaving the lakeshore.

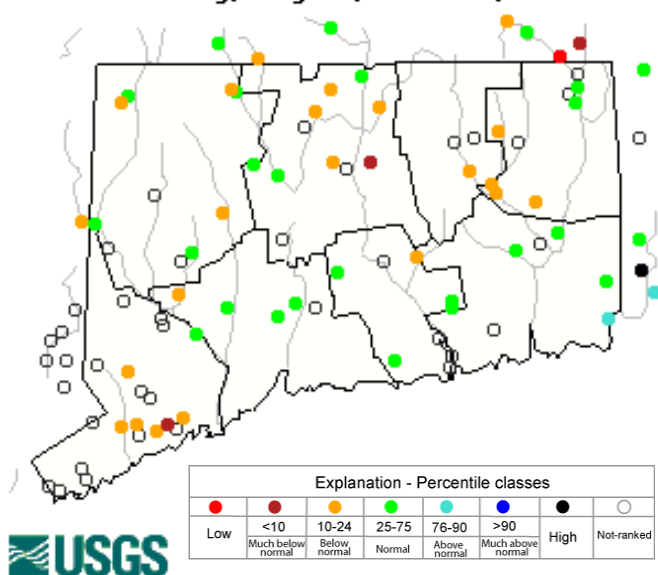
Coventry Lake (Wangumbaug Lake) boaters should avoid the area outlined in red to avoid fragmenting and spreading hydrilla. This is only area in the lake where hydrilla has been found.



GLASGO POND (drawdown). Glasgo Pond remains drawn down approximately 4 feet to facilitate dam modifications.

STREAM FLOW CONDITIONS (as of 5/4/2017)

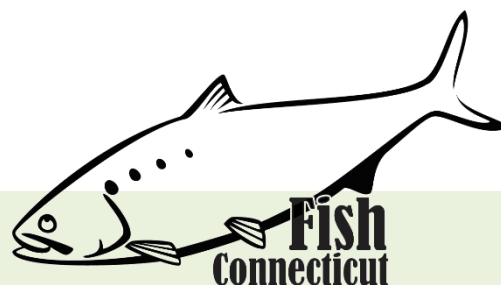
Thursday, May 04, 2017 19:30ET



Data in the state graphic to the left are generated by the United States Geologic Survey (USGS) and are available on line at: <http://waterdata.usgs.gov/ct/nwis/rt>. A percentile is a value on a scale of one hundred that indicates the percent of data in the data set equal to or below it. For example streamflow greater than the 75th percentile means only ¼ of the streamflow values were above the value and thus would be considered "above normal". Stream flow between the 25th and 50th are considered to be "normal flows" and those 25th or less are considered to be "below normal".

NEW INTERACTIVE TROUT STOCKING MAP NOW AVAILABLE.

Anglers can find more information on trout stocking online. A list of the waters that were dropped from this year's stocking schedule is on our webpage at: www.ct.gov/deep/fishing, along with an interactive trout stocking map (www.ct.gov/deep/troutstockingmaps) that anglers should find very useful for planning their next outing. The new application (mobile friendly) provides the number of days since the last stocking at each of our stocked waters enabling anglers to search for their favorite waterbody or by that have been recently stocked.

MARINE FISHING REPORT

Surface water temperatures in Long Island Sound (LIS) continue in the low 50's °F. Check out the following web sites for more detailed water temperatures and marine boating conditions:

<http://www.mysound.uconn.edu/stationstat.html>

http://marine.rutgers.edu/mrs/sat_data/?nothumbs=1

<http://www.ndbc.noaa.gov/>

<http://www.wunderground.com/MAR/AN/330.html>

Connecticut State Boundary Line in Long Island Sound. Anglers please note: Though Connecticut has reciprocity with neighboring states (New York, Rhode Island, Maine and Massachusetts), residents of

Connecticut are required to have a CT Resident Marine Waters Sport Fishing License to fish in the Marine District.

STRIPED BASS fishing has picked up with rising water temperatures in most of the tidal rivers. Spring striper spots include the Pawcatuck River, Mystic River, Thames River, Niantic River, lower Connecticut River (DEEP Marine Headquarters fishing pier), Black Hall River and the Housatonic River. Most anglers are reporting “schoolie” size fish with the occasional keeper.

SHORE FISHING SPOTS & TIDE TABLE INFORMATION

To find a saltwater shore fishing spot close to where you live, go to the following website:

<http://www.lisrc.uconn.edu/coastalaccess/>.

For **Enhanced Opportunity Shore Fishing** sites and other fishing information including a site map go to the following website

<http://www.depdata.ct.gov/maps/saltwaterfish/map.htm>.

Please see page 64 of the **2017 CT Angler’s Guide** for CT tide information.

WINTER FLOUNDER fishing remains very slow. The Poquonock River at Bluff Point State Park, Thames River in the Pine Island area, Niantic River, Jordan Cove, lower Saugatuck River and the channels in Norwalk Harbor have been the traditional flounder spots.

BLUEFISH and **WEAKFISH** should be arriving in LIS any time now! The Race, Plum Gut and the north side of Long Island including Gardiners Bay and the Peconics are early bluefish spots. Look for weakfish in New Haven Harbor over to the Milford/Stratford area. Fishing from shore at Sandy Point in New Haven has been productive for early season weakfish in previous years.

BLACK SEA BASS & SCUP OPENS MAY 1: Based on the CT DEEP Marine Fisheries program trawl survey there are plenty of sea bass and scup in the sound. Looks to be a fantastic opener.

CAUGHT A TROPHY FISH - MARINE TROPHY FISH AWARD PROGRAM AFFIDAVIT

Bonus Striped Bass Fishing Program

The Department of Energy and Environmental Protection is again conducting the **Bonus Striped Bass Fishing Program, which runs through December 31 in 2017.**

ALL TAGS HAVE BEEN DISTRIBUTED FOR 2017.

The Connecticut Department of Energy and Environmental Protection is an Affirmative Action/Equal Opportunity Employer that is committed to complying with the requirements of the Americans with Disabilities Act. Please contact us at (860) 418-5910 or deep.accommodations@ct.gov if you have a disability and need a communication aid or service; have limited proficiency in English and may need information in another language; or if you wish to file an ADA or Title VI discrimination complaint.

DEEP WEEKLY Fishing Report



**Connecticut Department of
ENERGY & ENVIRONMENTAL PROTECTION**

79 Elm Street, Hartford, CT 06106
www.ct.gov/deep